

# Stories in Colour

A Fundraising Exhibition of Artworks by Students  
from Buikwe Secondary School, Uganda



**Tuesday**

19th May

4 - 6pm

**Wednesday**

**Private View**

20th May 5 - 7pm

**Thursday**

21st May

4 - 6pm

**Saturday**

23rd May

10am - 4pm

Gerald Moore Gallery  
Mottingham Lane  
London SE9 4RW

[geraldmooregallery.org](http://geraldmooregallery.org)  
[info@geraldmooregallery.org](mailto:info@geraldmooregallery.org)  
02088570448



GERALD MOORE  
GALLERY

at Eltham College

# Stories in Colour

## A Fundraising Exhibition of Artworks by Students from Buikwe Secondary School, Uganda

**Stories in Colour** features 29 artworks created by students from **Buikwe Secondary School** in Uganda. This special exhibition offers visitors the opportunity to experience a vibrant collection of work while supporting an important cause. All proceeds from the fundraiser will go directly to Buikwe Secondary School to support its educational programmes and ongoing development.

Buikwe Secondary School is a partner school of **Eltham College**, connected through the charity **International Needs**. This partnership has grown through shared learning experiences, cultural exchange, and a commitment to education and community.

In summer 2025, a group of 14 Eltham College students, accompanied by Eltham College's chaplain, Rev. Houghton, visited Uganda, where they spent two weeks immersed in the life of Buikwe Secondary School. They attended lessons, collaborated on activities, contributed to community projects, and participated in chapel and worship. The visit provided a meaningful opportunity for cultural exchange, fostering empathy, understanding, and a global perspective among the students.

The relationship has also been strengthened through reciprocal visits. Mr Paul Ssematimba, Headmaster of Buikwe Secondary School, recently visited Eltham College, where he engaged with students and staff, sharing insights into education in Uganda. His visit encouraged thoughtful dialogue about both the similarities and differences in school life, deepening mutual respect and connection between the two communities.

The artworks in *Stories in Colour* reflect the creativity and lived experiences of the young artists. Rev. Houghton, reflects on the significance of the exhibition:

"I'm delighted that we are able to host this exhibition of art from the students at our partner school in Buikwe, Uganda. As many will know, I have spent a number of months with them and can testify to the extraordinary resilience and character of these students, but also to the enormous needs facing the school community there. I'm so grateful to Haf that ALL proceeds from the sales of these artworks will go back to the school in Buikwe to help with various projects, including their new IT facilities and infrastructure, as well as supporting 2 teachers visiting Eltham College."

### DONATIONS:

Donations can be made through **International Needs** (please scan the QR code).

**The first 29 people to donate £35 or more** through International Needs in support of this exhibition will be invited to choose one artwork to keep. Once your donation has been made, please notify the Gerald Moore Gallery, and we will arrange for you to select your artwork.





1. *Seasonal Rhythm*, 2026, Paper collage and pencil on canvas panel, 23 x 30 cm.



2. *Sunny Days*, 2026, Paper collage and pencil on canvas panel, 23 x 30 cm.



3. *Village Life*, 2026, Paper collage and pencil on canvas panel, 23 x 30 cm.



4. *Tree Pruning*, 2026, Paper collage and pencil on canvas panel, 23 x 30 cm.



5. *Cooking Over a Fire*, 2026, Paper collage and pencil on canvas panel, 23 x 30 cm.



6. *A Long Walk*, 2026, Paper collage, pine needles, tree bark, and pencil on canvas panel, 23 x 30 cm.



7. *Under the Sun*, 2026, Paper collage and dried grasses on canvas panel, 23 x 30 cm.



8. *Water Vessel*, 2026, Paper collage and pencil on canvas panel, 23 x 30 cm.



9. *Mowkie Milk*, 2026, Paint on canvas panel, 30 x 23 cm.



10. Apples, 2026, Paint on canvas panel, 30 x 23 cm.



11. Landscape, 2026, Paint on canvas panel, 30 x 23 cm.



12. Palm Tree, 2026, Paint on canvas panel, 30 x 23 cm.



13. Youth Group, 2026, Paint on canvas panel, 30 x 23 cm.



14. Products, 2026, Paint on canvas panel, 30 x 23 cm.



5. Soolu Mixed Fruit, 2026, Paint on canvas panel, 30 x 23 cm.



16. African, 2026, Coloured pencil, charcoal, and graphite pencil on canvas panel, 23 x 30 cm.



17. Holding Hands, 2026, Charcoal and pencil on canvas panel, 30 x 23 cm.



18. Family, 2026, Coloured pencil, ink and graphite pencil on canvas panel, 30 x 23 cm.



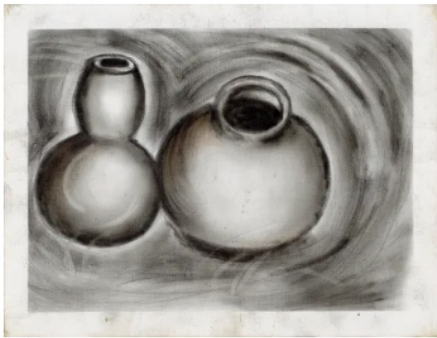
19. *Family Portrait*, 2026, Charcoal and pencil on canvas panel, 30 x 23 cm.



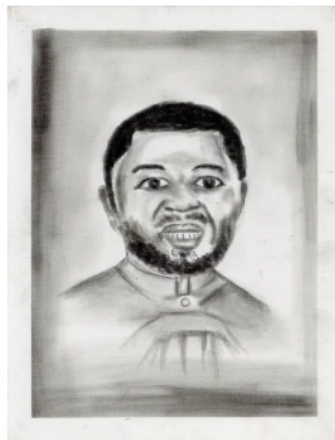
20. *Learning*, 2026, Charcoal and pencil on canvas panel, 23 x 30 cm.



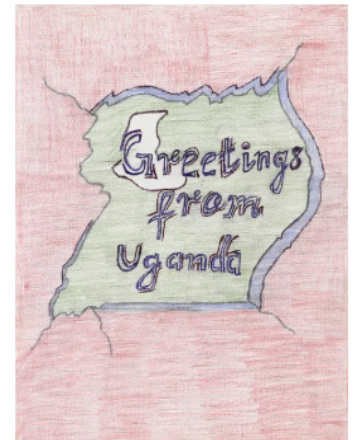
21. *Portrait of a Girl*, 2026, Pencil on canvas panel, 30 x 23 cm.



22. *Still Life of Vases*, 2026, Charcoal and pencil on canvas panel, 23 x 30 cm.



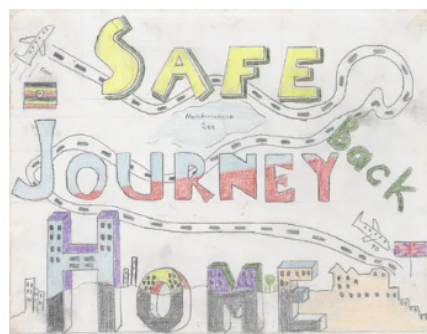
23. *Portrait of a Man*, 2026, Charcoal and pencil on canvas panel, 30 x 23 cm.



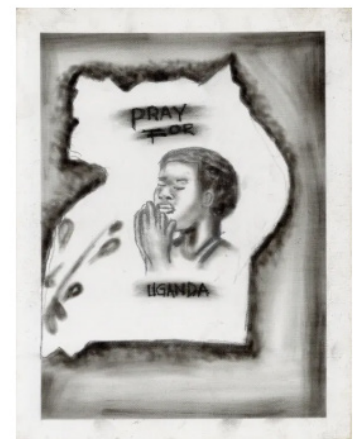
24. *Greetings From Uganda*, 2026, Coloured pencil, ink and graphite pencil on canvas panel, 30 x 23 cm.



25. *Insect*, 2026, Coloured pencil, ink and graphite pencil on canvas panel, 23 x 30 cm.



26. *Safe Journey Home*, 2026, Coloured pencil and graphite pencil on canvas panel, 23 x 30 cm.



27. *Pray for Uganda*, 2026, Charcoal and pencil on canvas panel, 30 x 23 cm.



28. *Good Partners*, 2026, Coloured pencil, ink and graphite pencil on canvas panel, 30 x 23 cm.



29. *Dear Friends*, 2026, Coloured pencil, paint and graphite pencil on canvas panel, 30 x 23 cm.

## Thank you for your donations!

The Gerald Moore Gallery is a centre for modern and contemporary art with learning at its heart. Opened in April 2012, in Mottingham, the gallery is uniquely set within the grounds of Eltham College and is a valuable resource for the students and the local community. The gallery has gained momentum hosting some exciting exhibitions including works by Matisse, Louise Bourgeois, and Cornelia Parker, whilst supporting emerging local artists. In unison with the exhibitions, the gallery's outreach programme works with local community groups, teachers, and schools, creating lasting relationships with our locality. Gerald Moore Gallery was made possible with the foresight and generosity of Old Elthamian, Dr Gerald Moore, many of whose works are archived at the gallery and who has a permanent exhibition on display.

For more information please contact: Haf Anuar at [info@geraldmooregallery.org](mailto:info@geraldmooregallery.org)

[Geraldmooregallery.org](http://geraldmooregallery.org)

Instagram: [@thegeraldmooregallery](https://www.instagram.com/thegeraldmooregallery)

Facebook: [@geraldmooregallery](https://www.facebook.com/geraldmooregallery)

X: [@geraldmooregall](https://www.x.com/geraldmooregall)

Tel: 02088570448